



# Datasheet

## IW-EP211-052

Bulk Head mount 4G + GNSS Combo Antenna

Datasheet v0.1

Specification subject to change without notice



## 1.0 Specification

### 1.1 Electrical Antenna 1 (Cellular)

<b>Frequency</b>	698 – 960MHz 1710 – 2690MHz
<b>Impedance</b>	50 Ohms
<b>Polarization</b>	Linear
<b>Gain</b>	2.5 dBi Max (Zenith)
<b>VSWR</b>	< 3.0

### 1.2 Electrical Antenna 2 (GNSS)

<b>Frequency</b>	1561 / 1575.42 / 1602MHz
<b>Impedance</b>	50 Ohms
<b>Polarization</b>	RHCP
<b>Gain</b>	2 dBic (Zenith)
<b>VSWR</b>	< 1.5

### 1.3 GPS LNA

<b>Gain</b>	28dB +/- 2dB Typical
<b>Noise Figure</b>	< 1.5dB
<b>VSWR</b>	< 2.0
<b>Supply Voltage</b>	3.0 – 5.0v
<b>Current Consumption</b>	< 15mA

### 1.4 Mechanical

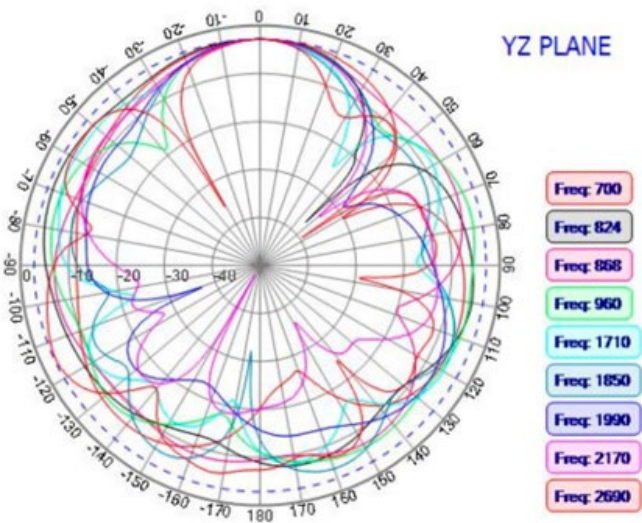
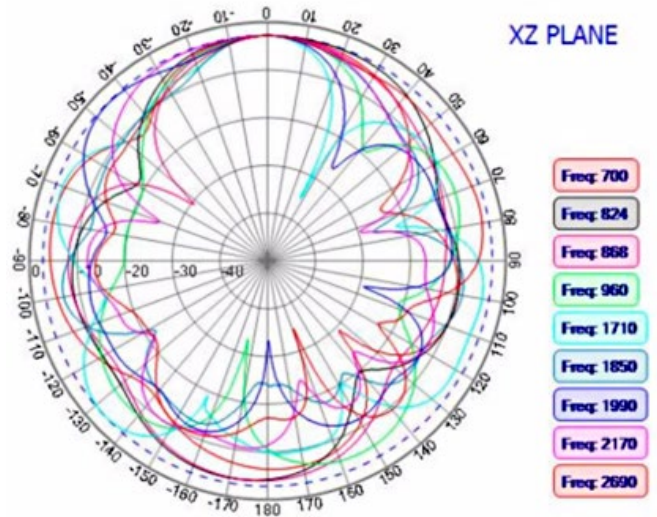
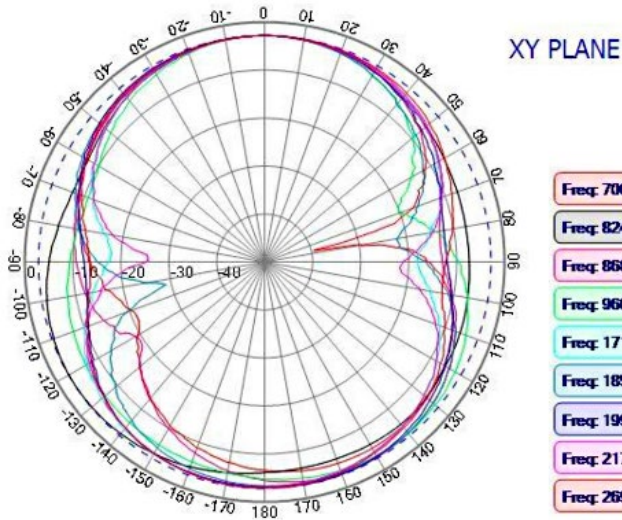
<b>Material</b>	ABS
<b>Colour</b>	Black
<b>Mounting Hole</b>	M12
<b>Dimensions</b>	81.3mm x 14.6mm

### 1.4 Environmental

<b>Operating Temperature</b>	-40C to +85C
<b>Humidity</b>	Up to 95%
<b>Ingress Protection</b>	IP67
<b>Vibration</b>	10 – 55Hz 1.5mm amplitude. Tested 2h

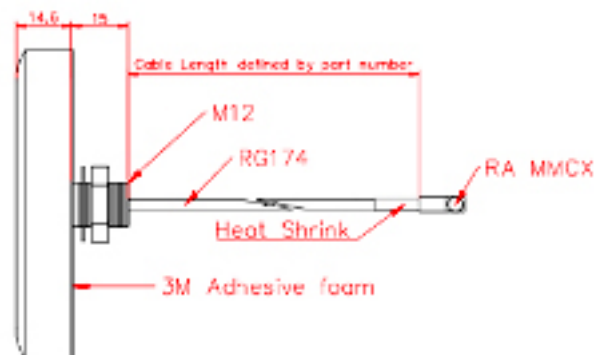
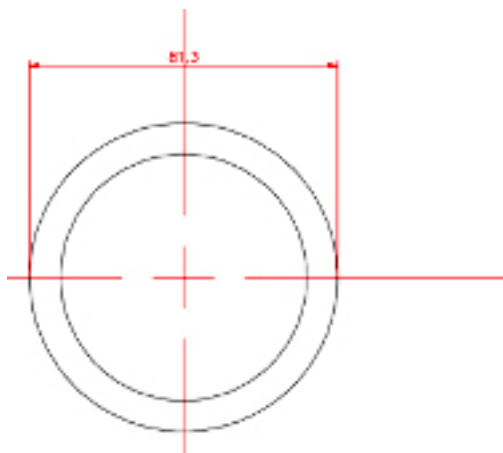
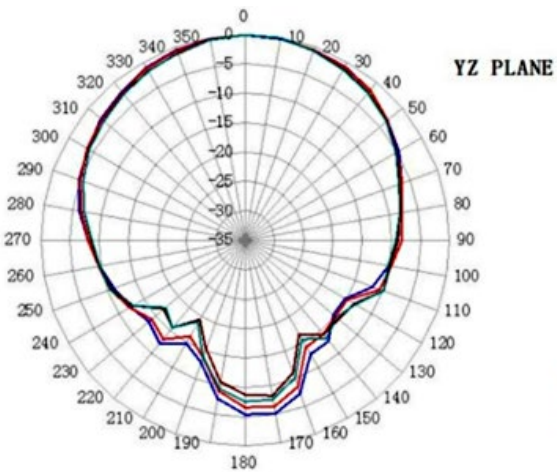
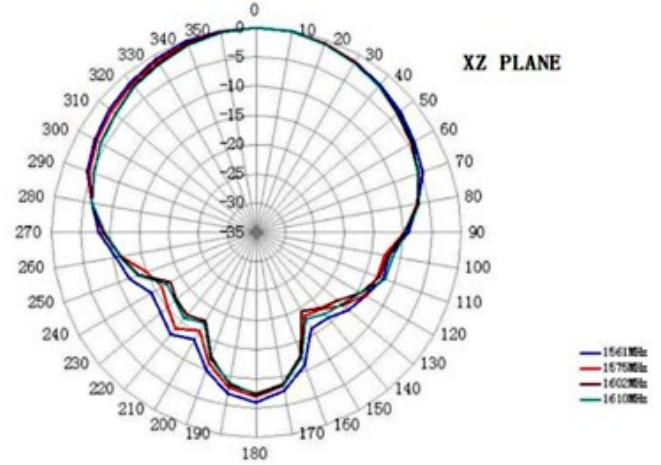
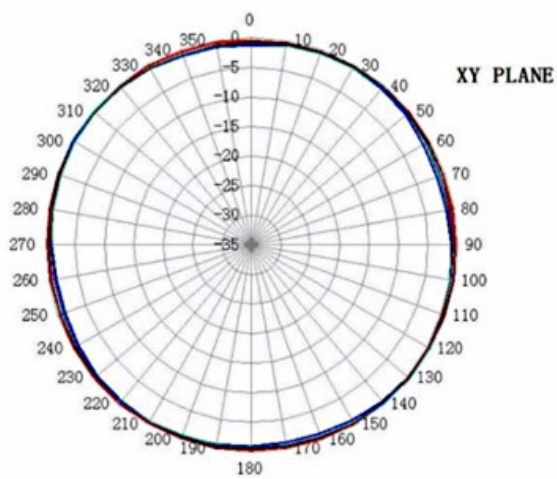
## 2.0 Radiation Patterns

### 2.1 Antenna 1 – Cellular





## 2.1 Antenna 2 – GNSS



## 4.0 Ordering Information

IoT Wireless Part  
IP211 Series

**IW-EP211-052-11-02-010**

Cable Length  
XX.X M

Cable Type

01	RG178
02	RG174

Connector Type (GNSS:LTE)

11	SMA + SMA
22	RPSMA+RPSMA
12	SMA+RPSMA
21	RPSMA+SMA

Connector Type (GNSS:LTE)

052	GNSS + LTE
-----	------------



**Revision History**

0.1 - First Release

23rd September 2020

[www.xgenrf.com](http://www.xgenrf.com)